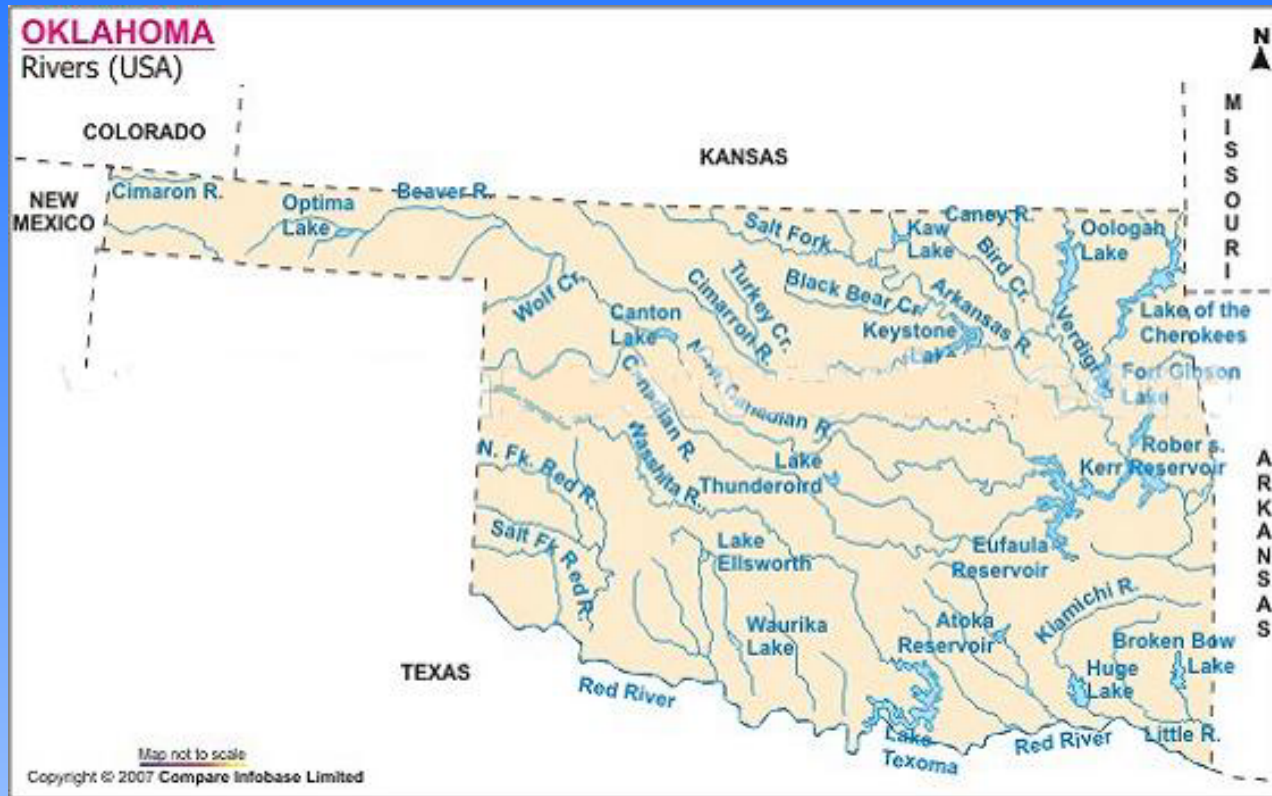


# RIVERS OF OKLAHOMA





**Daryl Jackson, owner of Iris Resources, Inc., has been in water process projects since 1993. He and his brothers developed a process called “Hydro-Evacuation” in May of 1996. This process avoids the strip mine process of mining coal, leaving the land virtually undisturbed.**

Daryl also controls brine water gathered from CBM wells, testing each load for tds. He uses the water pumped from the brine water tanks, streams the water while dumping fly ash to form a slurry. Once level has occurred he adds 3 ft. of topsoil, thus reclamation has occurred. His brother now lives and raises horses on the completed project.

Completed Project

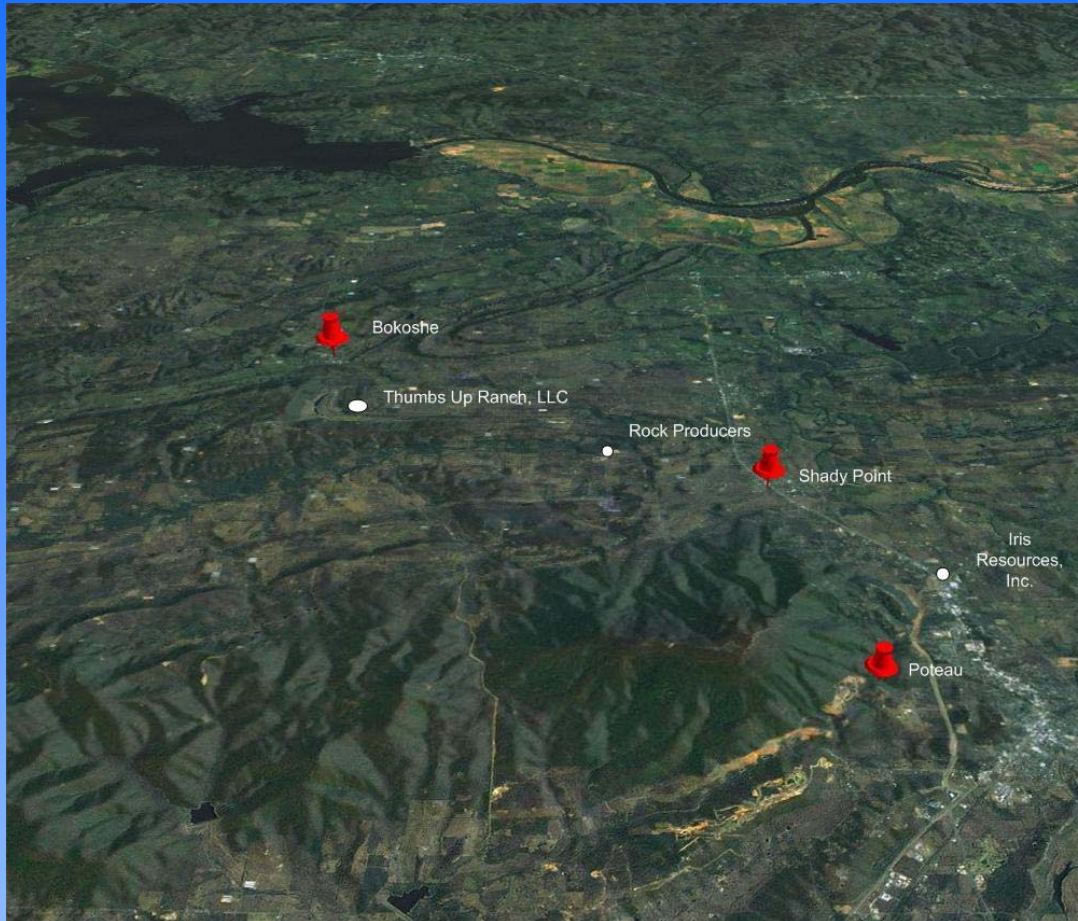


Reclamations Project





Poteau Oklahoma is located at the base of Cavanal Hill is officially regarded as the world's tallest hill; at 1,999 feet (609 m), it fails the definition of a mountain by one foot. Poteau River converges with the Arkansas River and is the only river in Oklahoma that flows from north to south.



Activities of Iris Resources nestle around Cavanal Hill.





Wister Lake lies to the south of Poteau, on the Poteau River and spans 65490 acre-feet.



**Robert S. Kerr Reservoir** is located on the Arkansas River in Sequoyah, Le Flore, Haskell, and Muskogee Counties in the state of Oklahoma, USA. The reservoir is impounded by Robert S. Kerr Lock and Dam at river mile 336.2 (km 541.1) on the Arkansas River, just a few miles below its confluence with the Canadian River. The lock and dam are part of the McClellan-Kerr Arkansas River Navigation System, which provides for barge navigation on the Arkansas River and some of its tributaries. The U.S. Army Corps of Engineers maintains the locks and navigation system.





This is an overflow of  
one of the local  
Lake reservoirs.

More than 500 named creeks and rivers make up Oklahoma's waterways,  
and with 200 lakes created by dams, it holds the highest number of  
artificial reservoirs in the nation



**This stream flows down the north face of Cavanal Hill. It gully washes in the spring and after strong rainstorms. During the warm months it provides cool water for all and where it pools there are some perch and young bass.**



**In high water, the “tube shoot” is popular in the area.**

Let me take you through a short ¼ mile trip of Poteau River.  
The streams coming down the hills and mountains are  
clean enough, but it feeds into the Poteau River, and that  
is not. People and industry have struck with trash and  
pollution.





Tires and trash line the water for a ¼ mile.



This is runoff from a factory up on the bank. Piled rocks protect the entrance to the river and then above piled brush is to disguise it.





**This, and much more, lies above the brush pile in different locations...**



**And the factory lies directly above it all.**





**Considering the condition of this ¼ mile strip of river, it's disheartening to know that the Poteau River is 206 km/128 mi long. Rising in Scott County, Arkansas, it flows westward into Oklahoma, south of Heavener, before turning northeast to flow past the town of Poteau and join the Arkansas River at Fort Smith.**

# Arkansas River and Poteau River Converge



## Blue Heron flying low over the Arkansas River



Please visit your Rivers and  
Creeks....and discover the Treasures.